

Customer: Poplar Creek Farms
 Customer Sample ID: Hawaiian Haze
 Laboratory Number: 20D0215-02



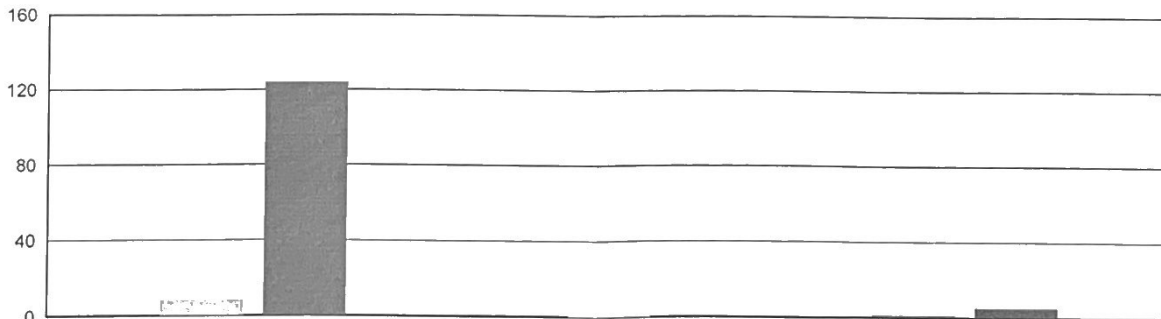
Cannabinoid Profile

Extraction Technician: DF
 Analytical Chemist: MF

Extraction Date(s)	Analysis Date(s)
4/24/2020	4/24/2020

Cannabinoids (HPLC)		Results	
	LOD (mg/g)	%	mg/g
Cannabidivarin (CBDV)	<0.10		
Cannabidiolic Acid (CBD-A)		12.39	123.9
Cannabigerolic Acid (CBG-A)		0.23	2.3
Cannabigerol (CBG)		0.09	0.9
Cannabidiol (CBD)		0.85	8.5
Tetrahydrocannabivarin (THCV)	<0.10		
Cannabinol (CBN)	<0.10		
delta 9-Tetrahydrocannabinol (THC)		0.13	1.3
delta 8-Tetrahydrocannabidol	<0.10		
Cannabichromene (CBC)		0.07	0.7
delta-9-Tetrahydrocannabinolic Acid (THC-A)		0.51	5.1
Cannabinoids Total		%	mg/g
Max Active THC		0.58	5.82
Max Active CBD		11.75	117.52
T.Active Cannabinoids		1.15	11.50
Total Cannabinoids		14.30	143.00
Ratios			
20.50:1 CBD to THC		0.05:1 THC to CBD	

Cannabinoid (mg/g)



■ Cannabichromene (CBC)	□ Cannabidiol (CBD)	■ Cannabidiolic Acid (CBD-A)	■ Cannabidivarin (CBDV)	■ Cannabigerol (CBG)
■ Cannabigerolic Acid (CBG-A)	■ Cannabinol (CBN)	■ delta 8-Tetrahydrocannabidol	■ delta 9-Tetrahydrocannabinol (THC)	■ delta-9-Tetrahydrocannabinolic Acid (THC-A)
■ Tetrahydrocannabivarin (THCV)				

Reporting Limits will vary based on sample extraction weight used for the analysis

Altitude Consulting, LLC utilizes NIST traceable Reference Standards and Certified Reference Material to calibrate analytical instruments along with proven analytical methods. The methods are applied in the most ethical manner following good laboratory practice guidelines. The results of this report are based solely on the sample submitted and cannot be reproduced.

Customer: Poplar Creek Farms
 Customer Sample ID: Sour Space Candy
 Laboratory Number: 20D0215-05



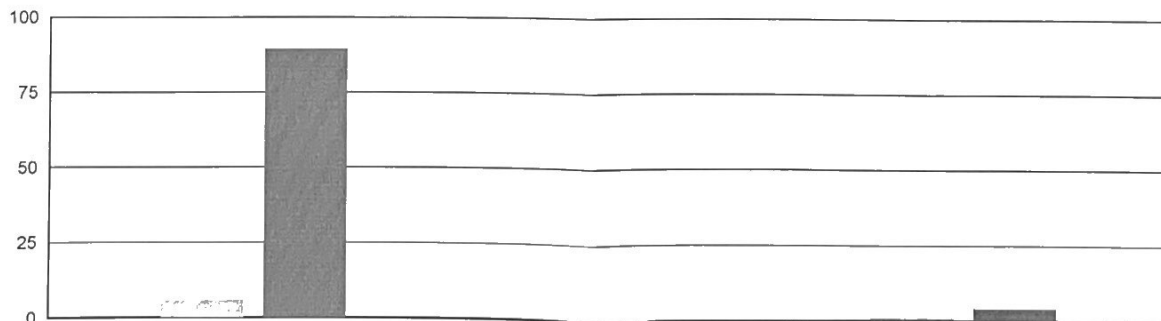
Cannabinoid Profile

Extraction Technician: DF
 Analytical Chemist: MF

Extraction Date(s)	Analysis Date(s)
4/24/2020	4/24/2020

Cannabinoids (HPLC)		Results	
	LOD (mg/g)	%	mg/g
Cannabidivarin (CBDV)	<0.090		
Cannabidiolic Acid (CBD-A)		8.94	89.4
Cannabigerolic Acid (CBG-A)		0.17	1.7
Cannabigerol (CBG)		0.06	0.6
Cannabidiol (CBD)		0.58	5.8
Tetrahydrocannabivarin (THCV)	<0.090		
Cannabinol (CBN)	<0.090		
delta 9-Tetrahydrocannabinol (THC)		0.08	0.8
delta 8-Tetrahydrocannabidol	<0.090		
Cannabichromene (CBC)		0.04	0.4
delta-9-Tetrahydrocannabinolic Acid (THC-A)		0.41	4.1
Cannabinoids Total		%	mg/g
Max Active THC		0.44	4.35
Max Active CBD		8.42	84.23
T.Active Cannabinoids		0.76	7.60
Total Cannabinoids		10.30	103.00
Ratios			
19.61:1 CBD to THC		0.05:1 THC to CBD	

Cannabinoid (mg/g)



■ Cannabichromene (CBC)	■ Cannabidiol (CBD)	■ Cannabidiolic Acid (CBD-A)	■ Cannabidivarin (CBDV)	■ Cannabigerol (CBG)
■ Cannabigerolic Acid (CBG-A)	■ Cannabinol (CBN)	■ delta 8-Tetrahydrocannabidol	■ delta 9-Tetrahydrocannabinol (THC)	■ delta-9-Tetrahydrocannabinolic Acid (THC-A)
■ Tetrahydrocannabivarin (THCV)				

Reporting Limits will vary based on sample extraction weight used for the analysis

Altitude Consulting, LLC utilizes NIST traceable Reference Standards and Certified Reference Material to calibrate analytical instruments along with proven analytical methods. The methods are applied in the most ethical manner following good laboratory practice guidelines. The results of this report are based solely on the sample submitted and cannot be reproduced.